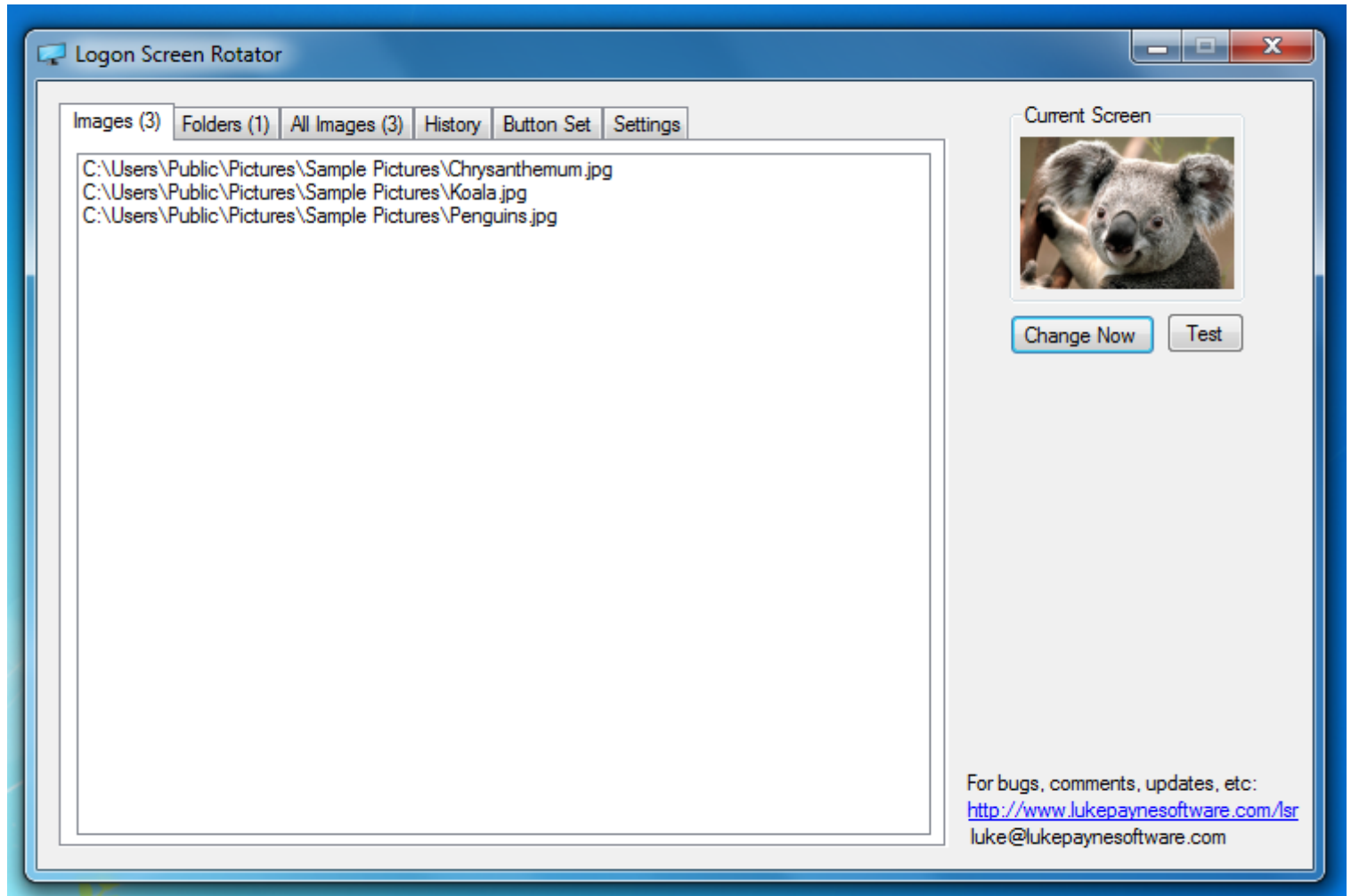
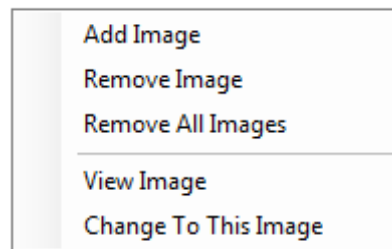


Windows 7 Logon Screen Rotator – User Guide

To use Logon Screen Rotator, you navigate around the program by using the tabs up the top of the program.



Here is a list of individually added images that have been added to the program under the Images tab.



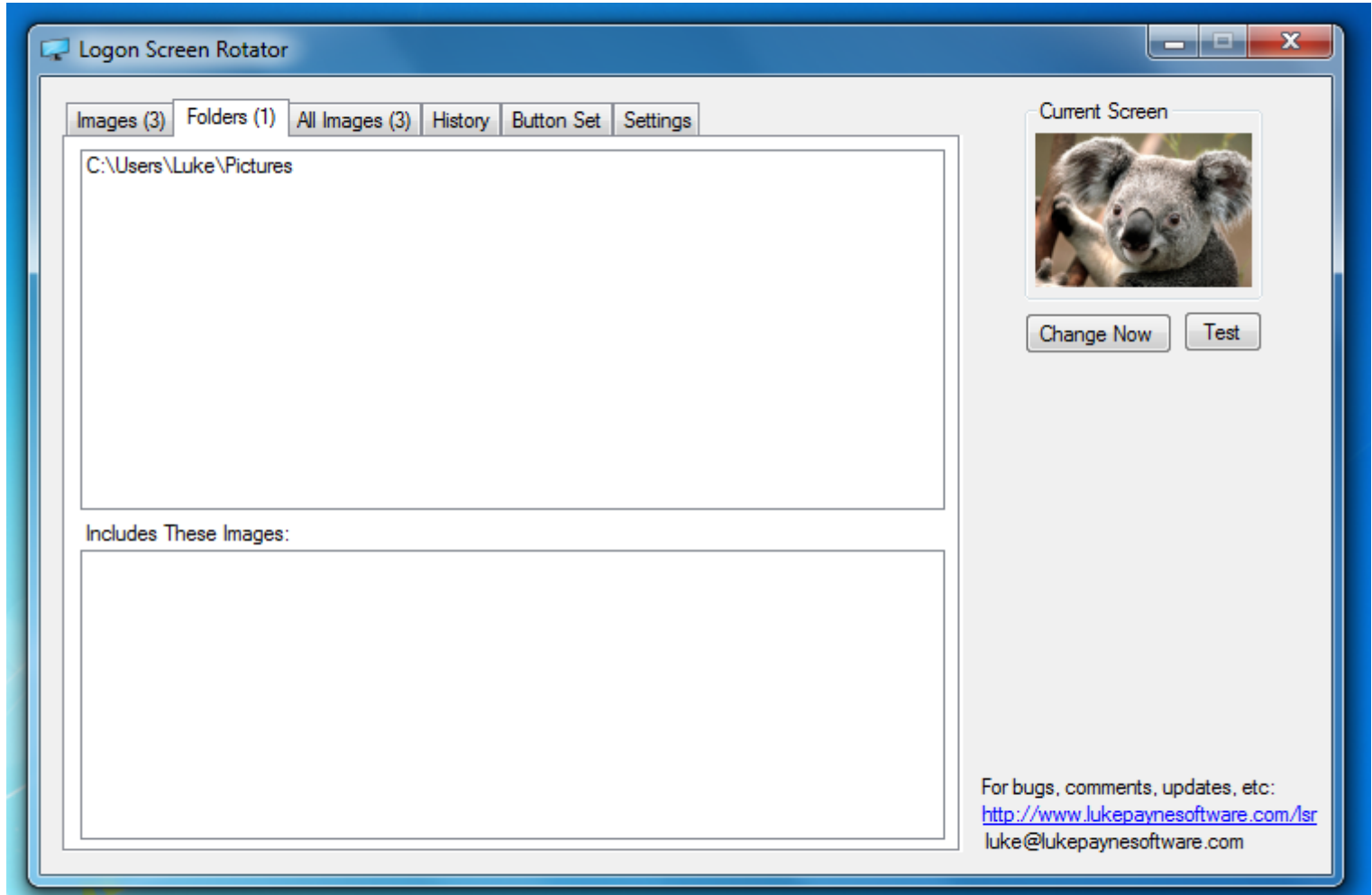
To add a new image, Right Click on the list and select "Add Image". Then navigate to the image and click "Open".

To remove an image from the list, select an image, Right Click and select "Remove Image".

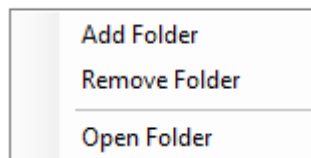
To remove all images, select "Remove All Images".

If you would like to view the image in "Explorer", select "View Image".

If you would like to change the logon screen to an image you have selected, Right Click and select "Change To This Image".



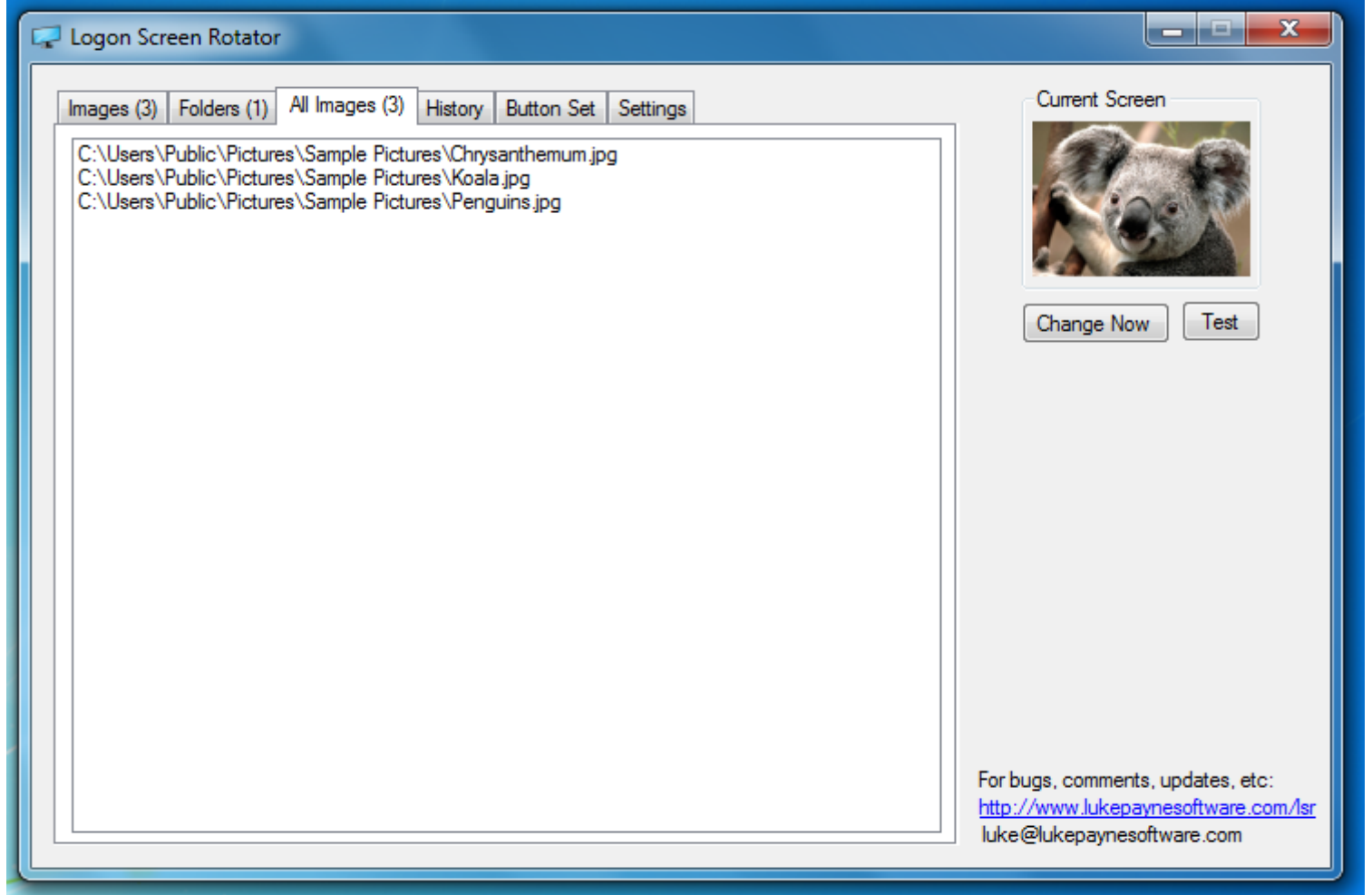
Under the Folders tab you can choose a folder of images and they will be added to the program.



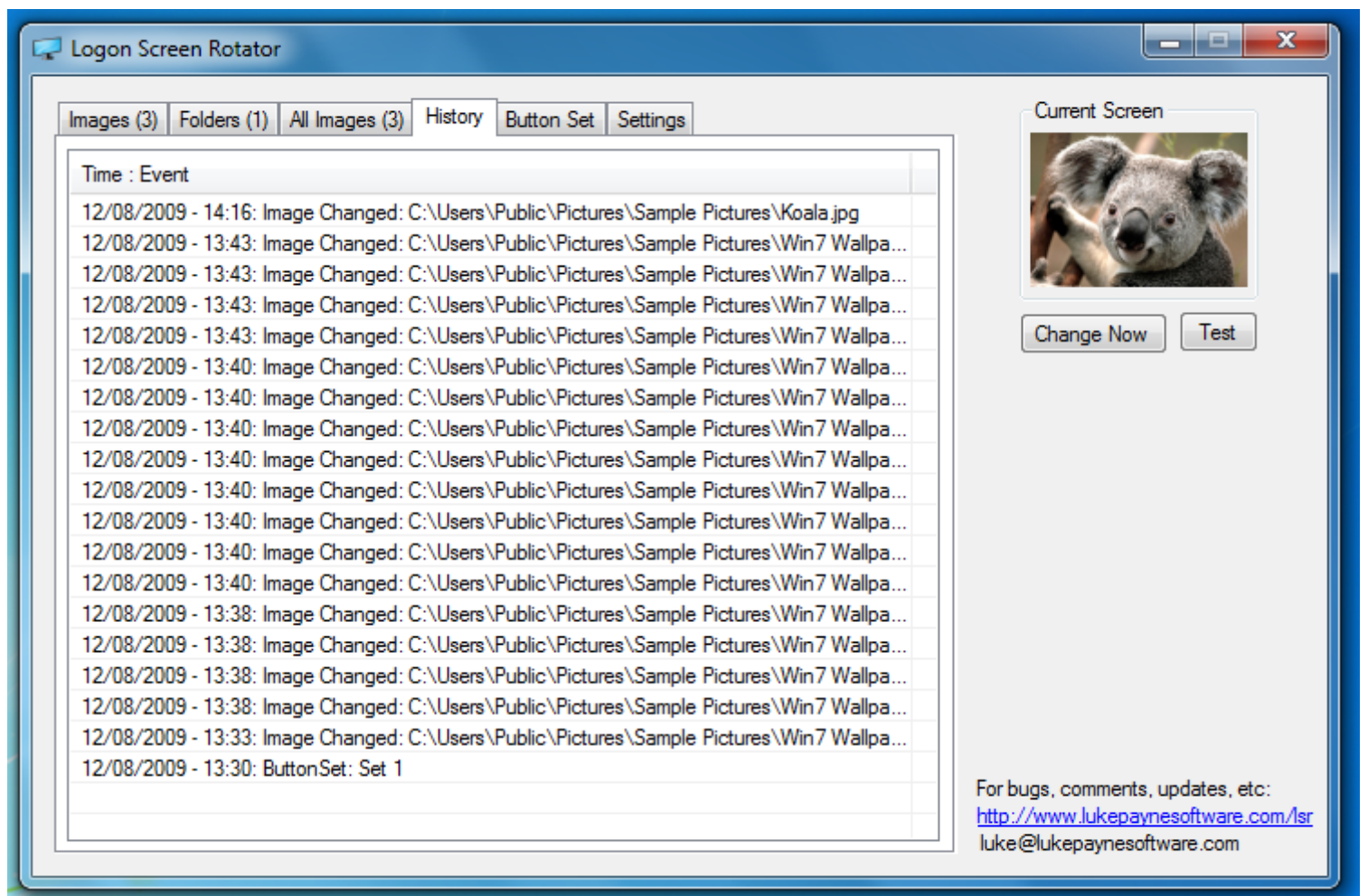
The procedure to add and remove folders is the same as images, simply Right Click and choose your option.

Selecting "Open Folder" will open the selected folder in "Windows Explorer".

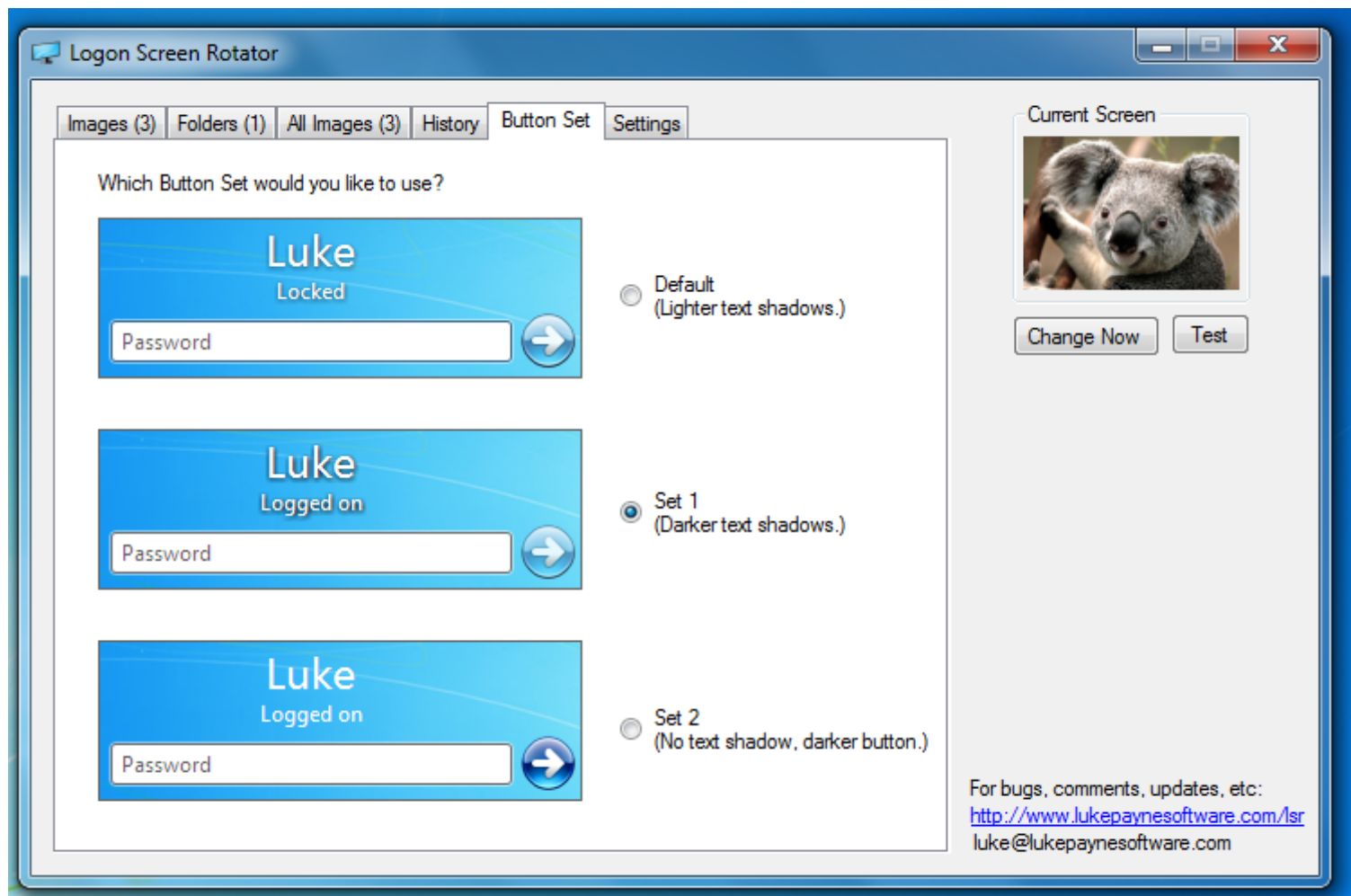
Below the list of folders is a list of images contained within the folders listed above. (You can turn this list off under the settings tab).



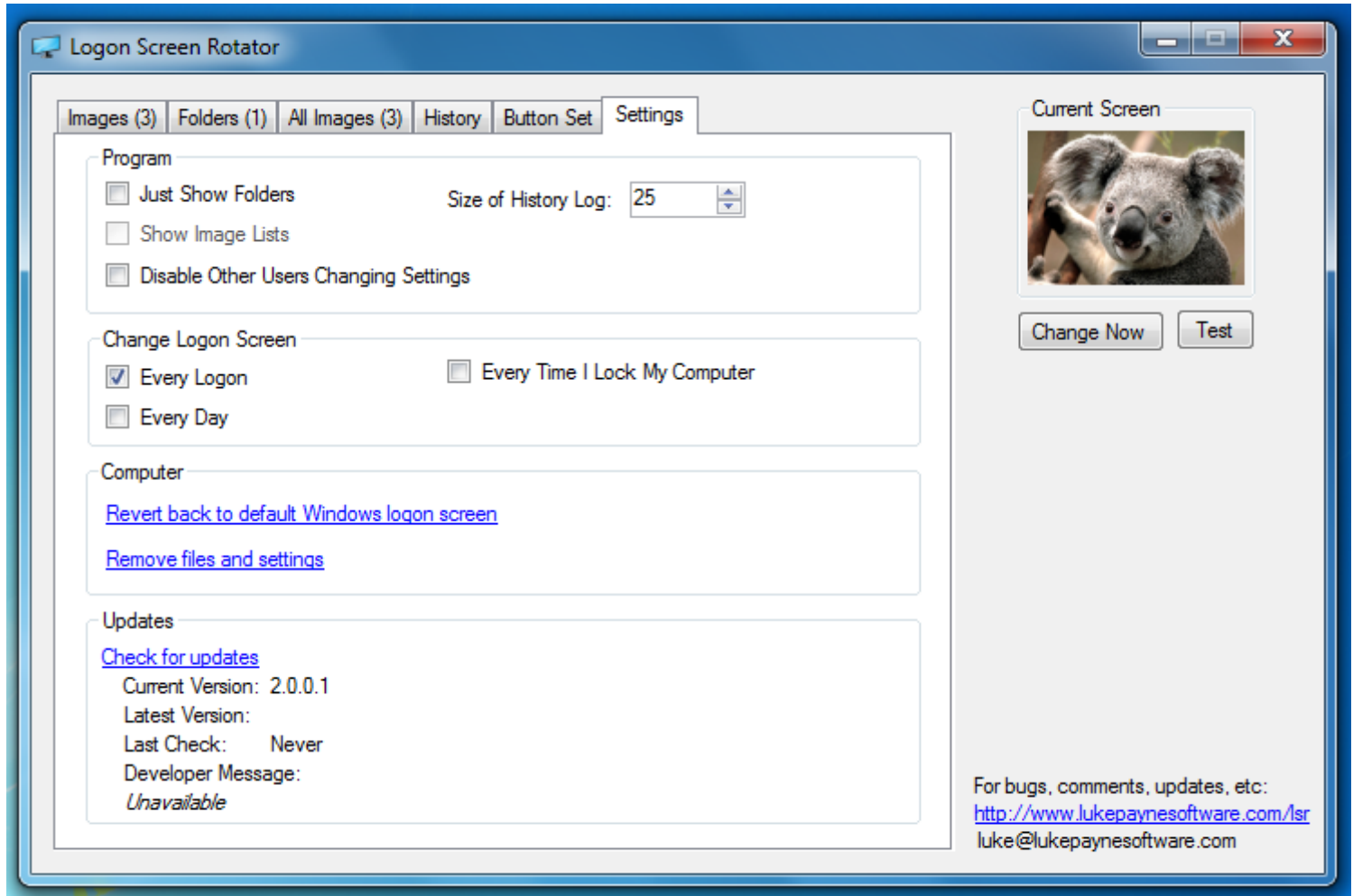
Under the All Images tab is a list of all of the images which the program will rotate thru, nothing can be changed here. You may right click and either change to the selected image or view it in "Explorer".



The history tab contains a list of your changes to the logon screen.



Under the Button Set tab you may select a button set to use. Simply select which set you would like to use and it will be applied automatically. If you would like to see what it looks like on your current screen, click test under the current screen image.



Under the Settings tab are the following settings:

- **Program**
If you select "Just Show Folders" then only the folders will be shown not the list of images below it, in the Folders tab. If you select the "Disable Other Users Changing Settings" option, you will be the only user able to change settings in the program and add images. You may also change the size of the History Log here.
- **Change Logon Screen**
Here you select the interval on which you would like the logon screen image changed. Current options are Every Logon, Every Day and Every Lock of computer.
- **Computer**
Click on one of these links to either remove all files and settings for the program or revert to the Windows default logon screen.
- **Updates**
Click on "Check for updates" and the program will connect to the internet and check if any newer versions are available.
Under "Developer Message" will appear any messages from the developer, if there are any, after you have checked for updates.

After selecting all of your settings and images, you may exit the program. Upon exiting you will be asked whether you would like to setup the program or not. If you choose yes, the program will begin to change the logon screen with the settings applied. If you chose no, nothing will be applied or setup.

<http://www.lukepaynesoftware.com/lsr/>